



DOMAIN PRECINCT  
COMMUNITY REFERENCE GROUP

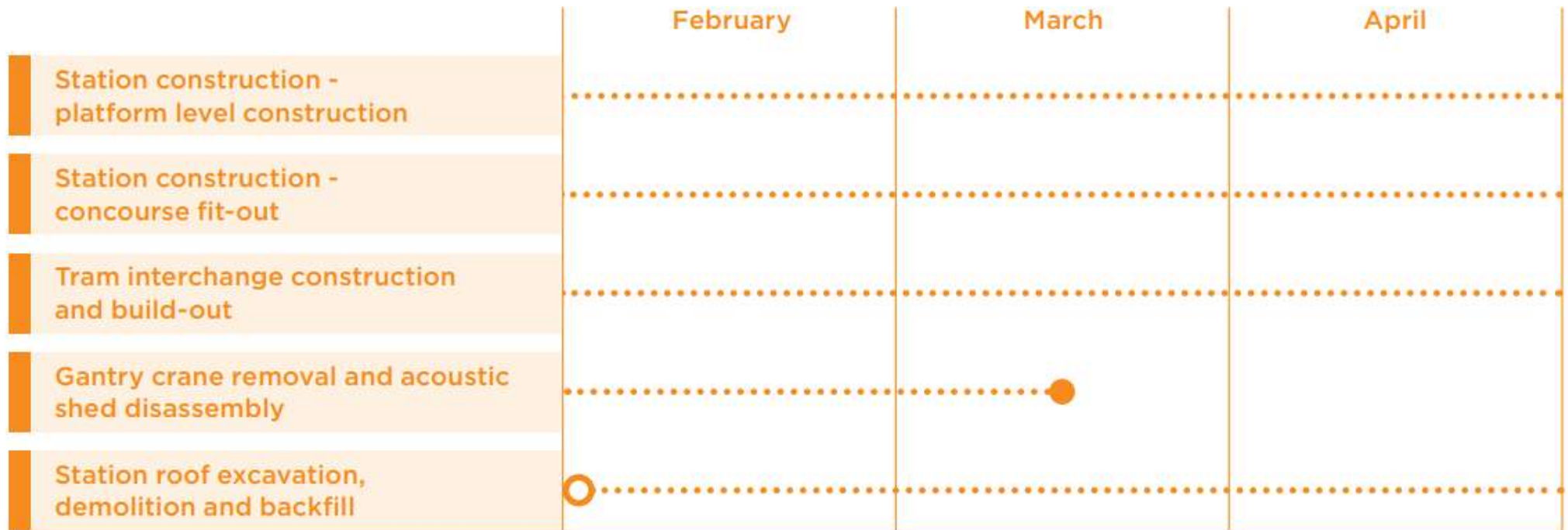
16 FEBRUARY 2021



# **WORKS UPDATE: LOOKAHEAD**

## WORKS UPDATE

### 2022 LOOK AHEAD





# **WORKS UPDATE: SERVICE INVESTIGATION WORKS**

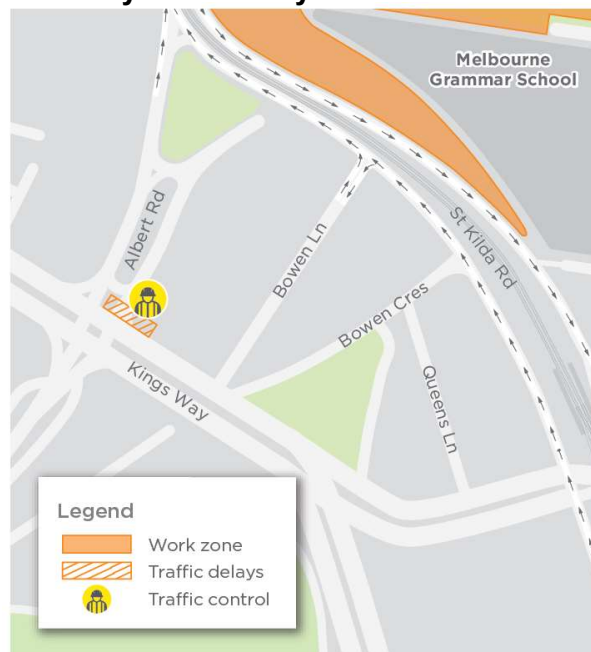
## WORKS UPDATE

### SERVICE INVESTIGATIONS



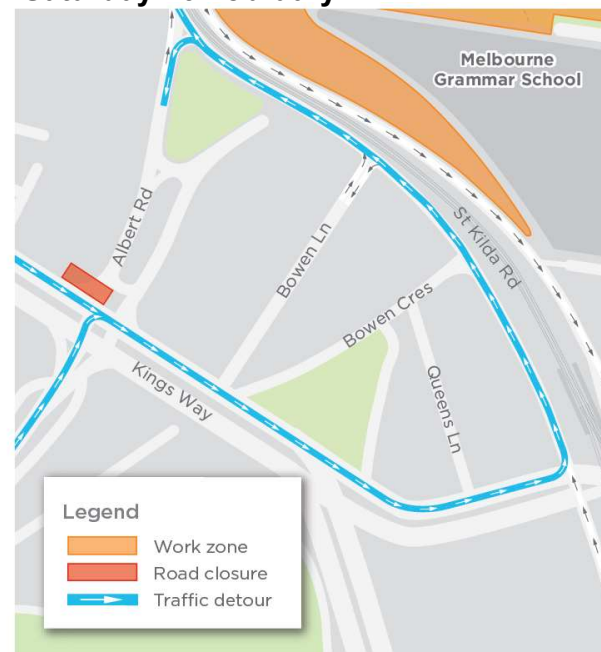
- Service investigations will be carried out across the precinct throughout the next 6 months
- These investigations will confirm locations of underground services prior to works and to inform design
- Albert Road service investigations is the first of these works on **Saturday 19 February** and **Saturday 26 February**
- Service investigation on Park Street will be next. This will require the closure of the left turn from St Kilda Road into Park Street for one day
- Notification will be provided in advance of these Park Street works as it will impact Hallmark driveway access

**Saturday 19 February**



*Indicative only*

**Saturday 26 February**



*Albert Road Service Investigation Works*



# **WORKS UPDATE: TUNNEL WORKS**

## CROSS PASSAGES AND INVERT WORKS COMPLETED TUNNELS



- Invert concrete work between Anzac Station and Town Hall Station is complete
- Crews finished demobilising from the tunnels earlier this month
- Tunnel fit-out works are well underway between Anzac Station and Eastern Portal
- Later this month additional rail tunnel fit-out gantries will be delivered to site. As they are oversized vehicles they will be driven into site during the night and unloaded after 7am.



*Completed invert concrete leading to Anzac Station*



# **WORKS UPDATE: STATION CONSTRUCTION**



## WORKS UPDATE

### TRAM INTERCHANGE



- Underground D-wall panel demolition is complete. Only minor trimming works remain
- The installation of L-shaped precast panels is complete. These are installed on the underside of the oculus
- The public stairs, lift shaft frames and pedestrian bridges across the oculus have now been installed.

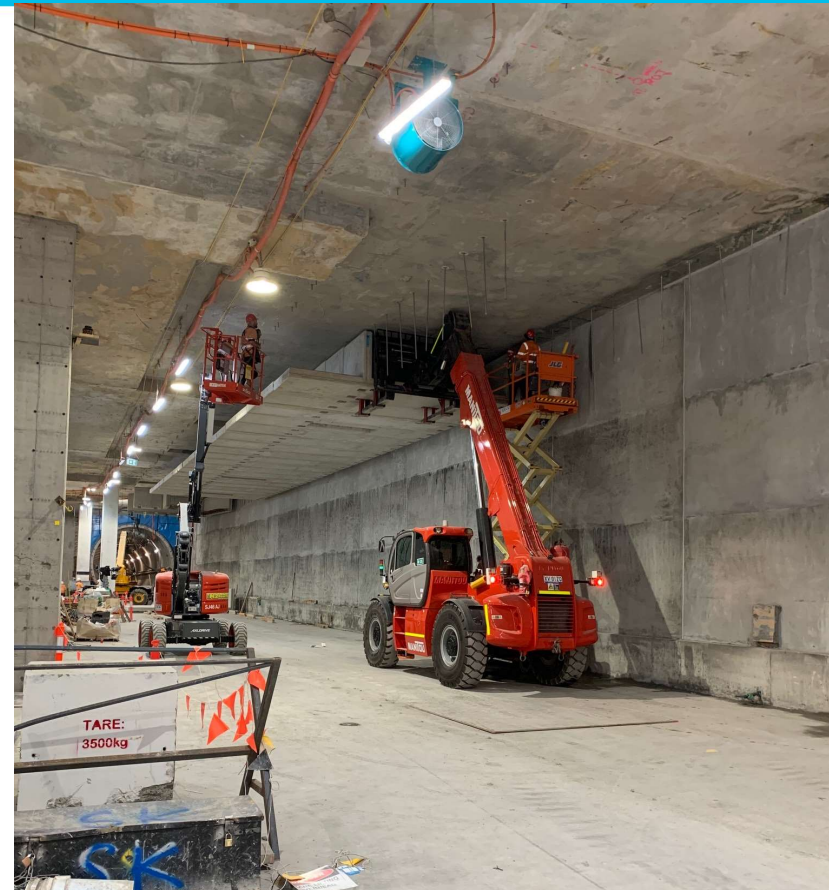


## WORKS UPDATE

### PLATFORM LEVEL (SOUTHERN END)



- The final section of the base slab was poured in the south box just before the Christmas break
- The temporary plunge columns that supported the station box can now be removed
- Construction of fireproof walls along the station box continues
- The first sections of the precast concrete Over Track Exhaust (OTE) ducts have been installed
- Precast sections of the future station platforms will follow shortly.



*The first OTE panels installed as headwall works continue*



## WORKS UPDATE

### PLATFORM LEVEL (NORTHERN END)



- Works are now complete on the tunnel invert between Anzac Station and the CBD
- This will see works ramp up on the construction of the station infrastructure at platform level.
- Both headwalls, which connect the tunnel structures to the station box can now be completed
- The fire escape stairwell at the northern end are also being constructed.

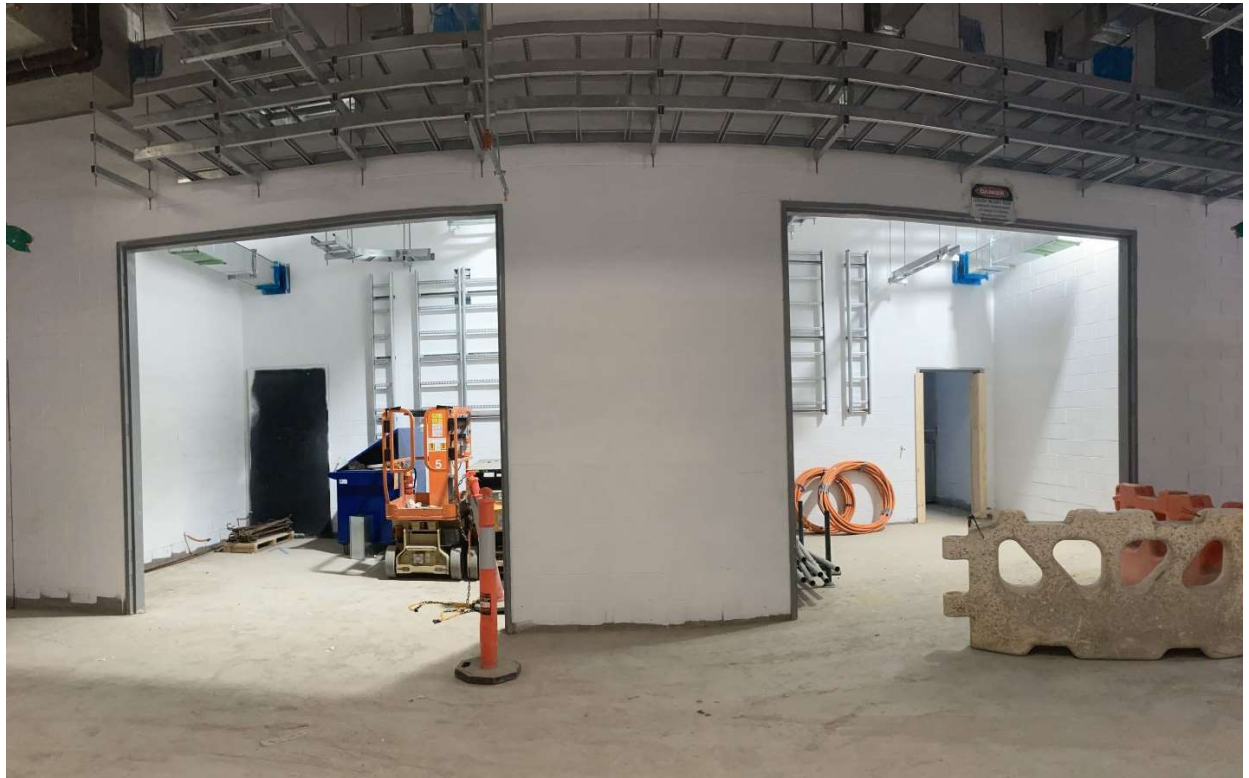


## WORKS UPDATE

### CONCOURSE LEVEL (SOUTH END)



- The back of house area at the southern end of the concourse is quickly taking shape, with crews painting and finishing rooms
- The temporary plunge columns extend from base slab up to the station roof – these have also been removed at concourse level



*Internal rooms taking shape*

## WORKS UPDATE

### CONCOURSE LEVEL (NORTH END)



- The D-wall demolition between the tram box and the station box is now complete
- Blockwork can now begin in the northern end of the concourse, similar to the work at the southern end

*Demolished D-walls and  
L-shaped precast panel  
installation*



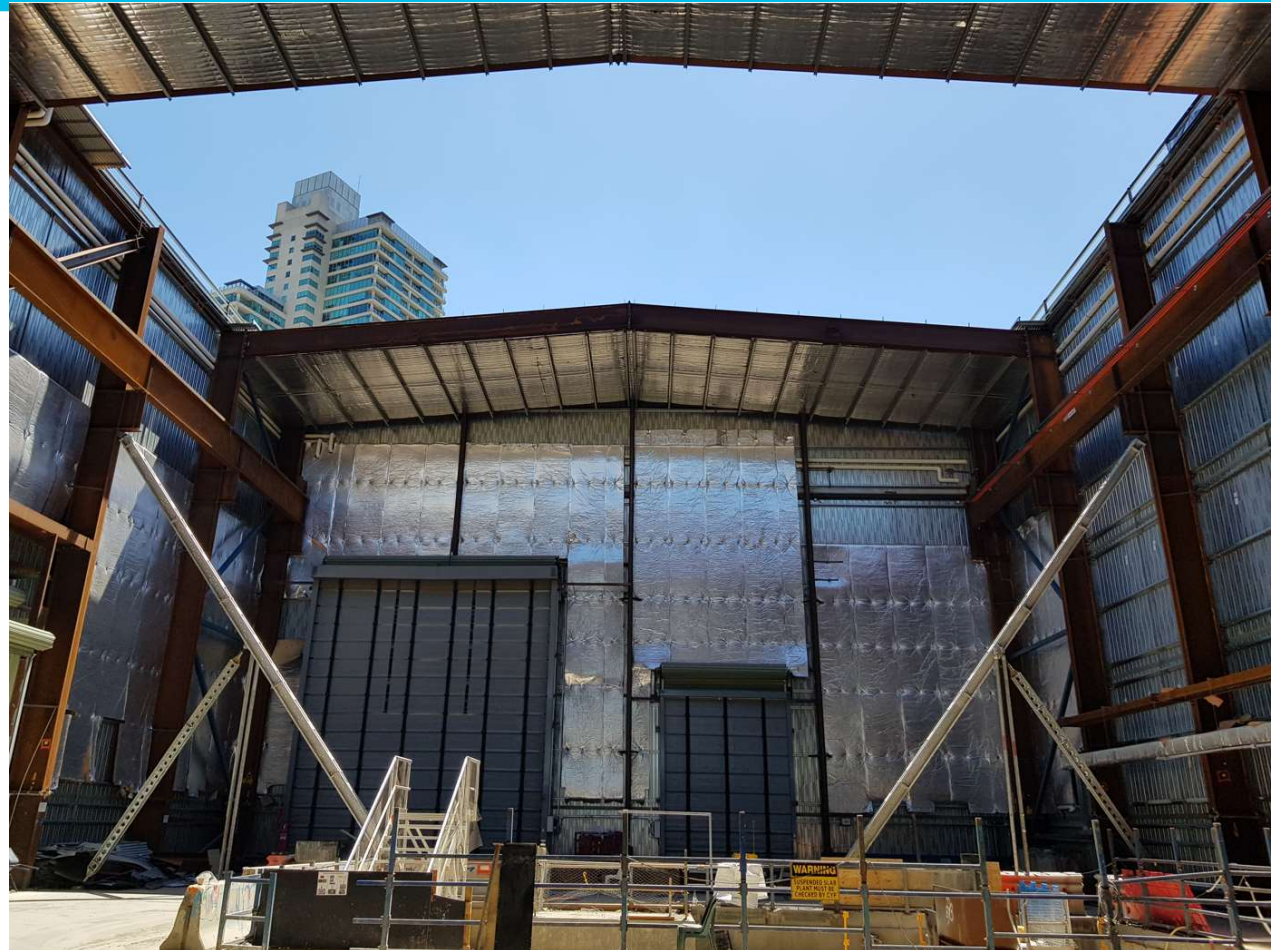


## WORKS UPDATE

### SHED REMOVAL



- The three gantry cranes have been removed from the acoustic shed and removed from site
- Shed demolition has now ramped up with excavators pulling down sections of the acoustic shed
- The shed demolition will be complete by early March
- The acoustic shed removal will mean the start of the surface works at Anzac Station.



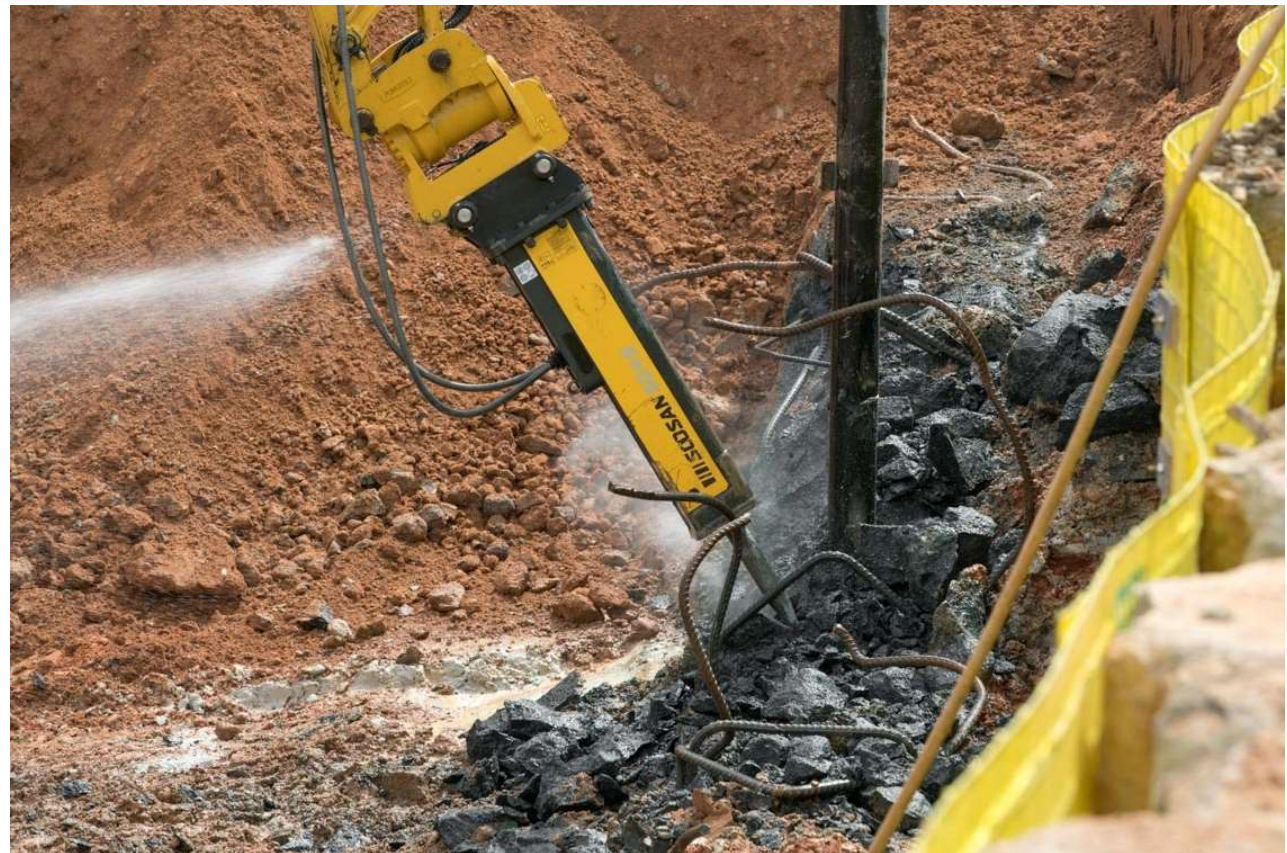
## WORKS UPDATE

### SURFACE WORKS



From March, surface works on top of the station roof commences. This includes:

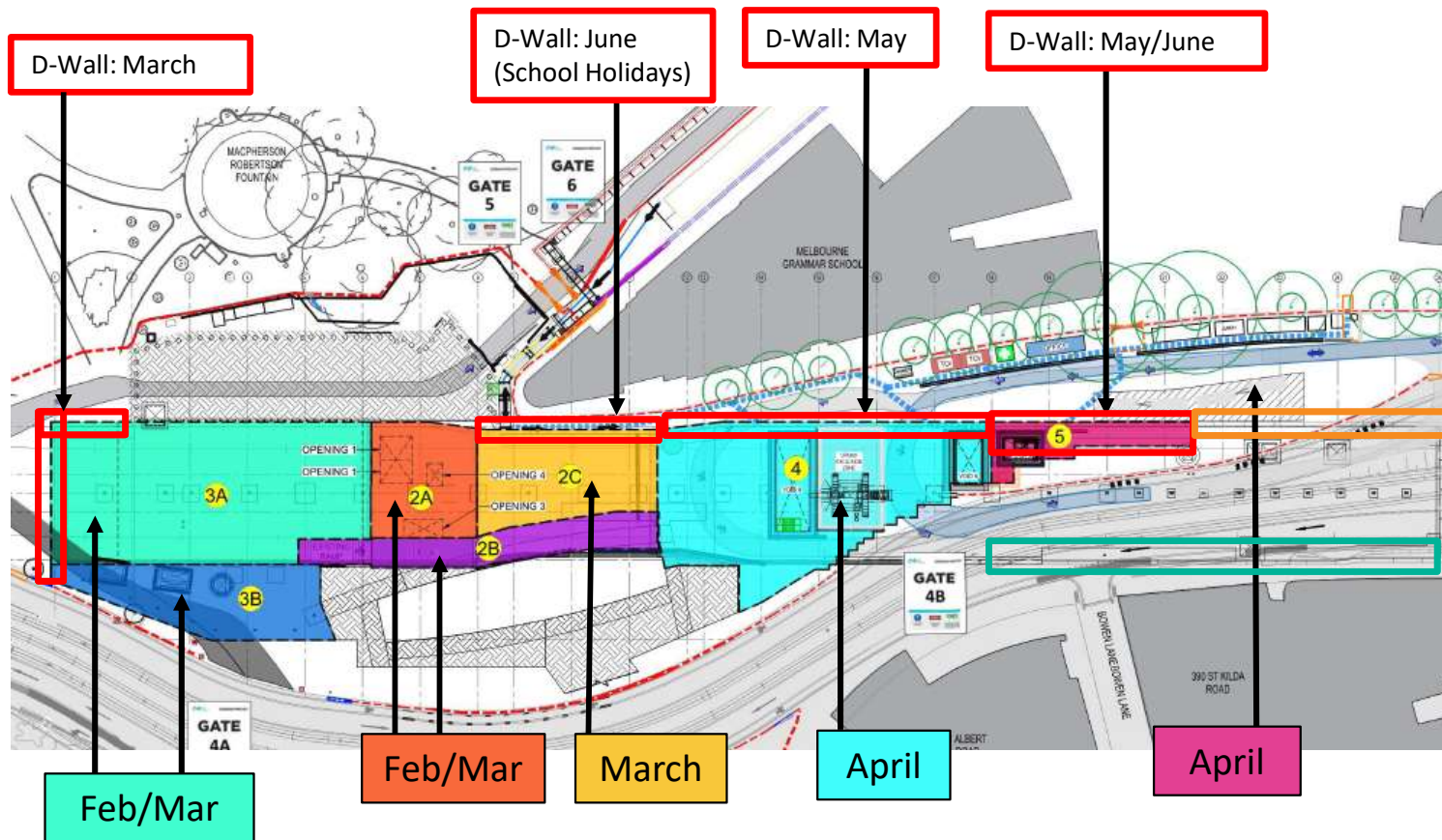
- Break out of temporary working surfaces
- Excavation and disposal of temporary backfill
- Breaking D-walls back to roof level
- Waterproofing the station roof
- Installing services on station roof and backfilling (includes the use of vibrating rollers)





# WORKS UPDATE

## WORK AREA BREAKDOWN - SURFACE WORKS START DATES



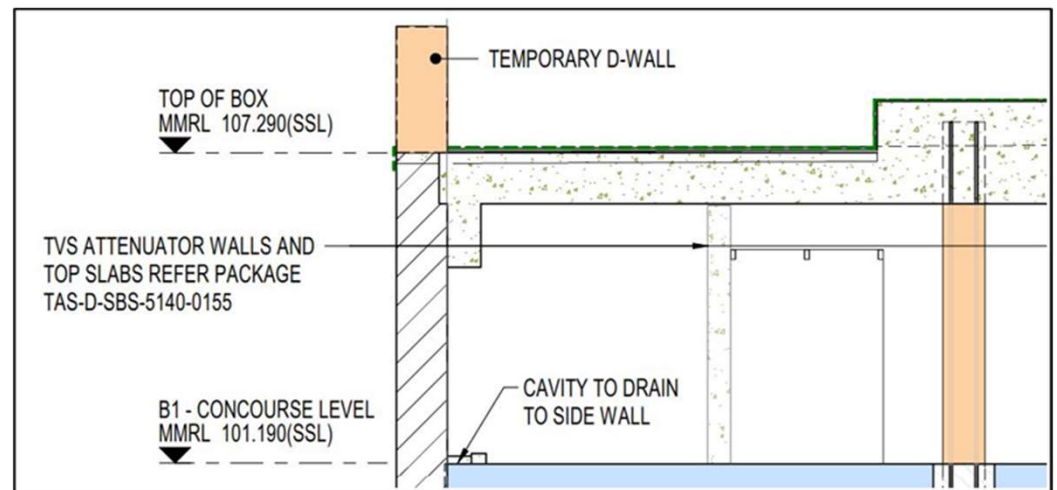


## WORKS UPDATE

### D-WALL DEMOLITION

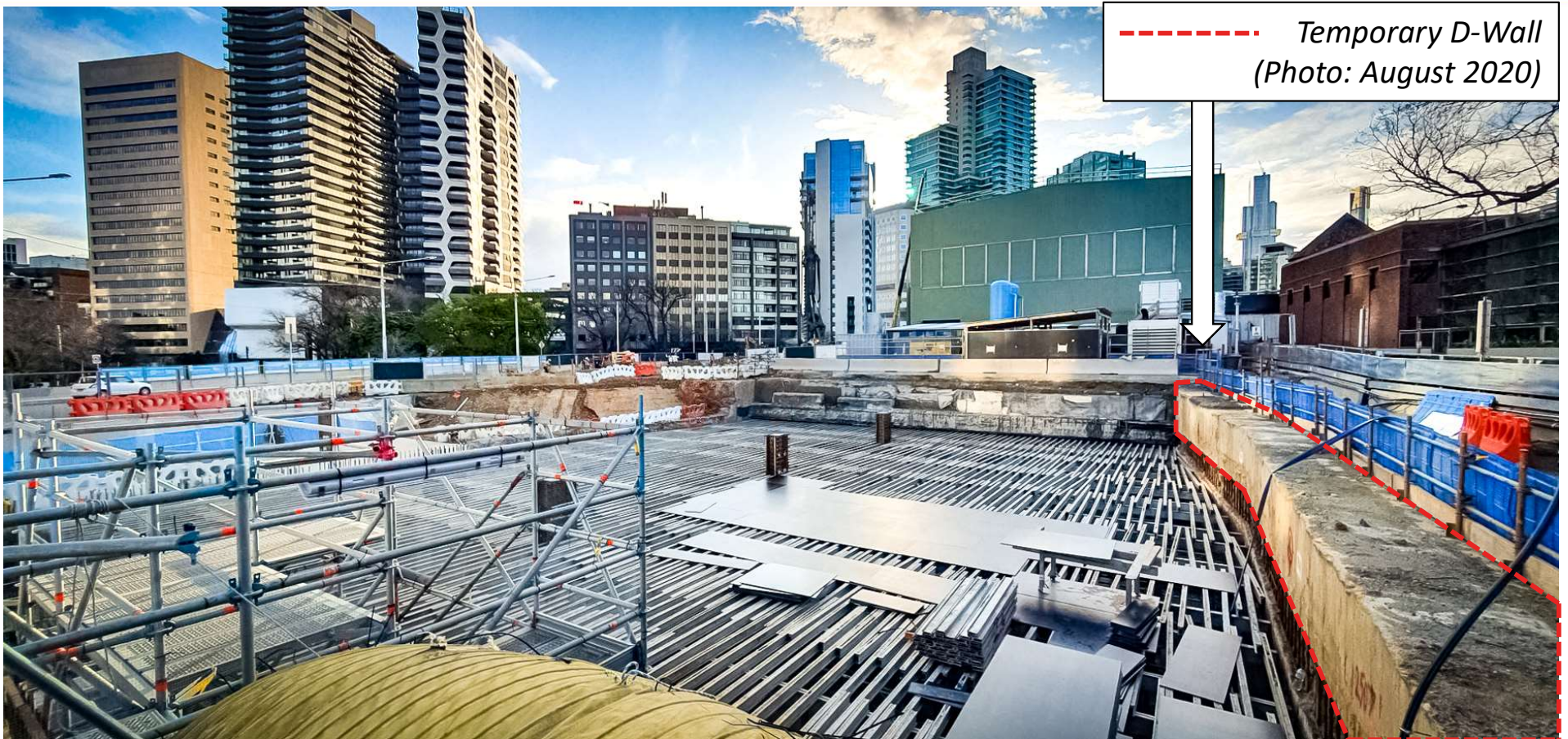


- D-wall demolition is required around certain sections of the station box
- CYP will be using excavators with hydraulic hammers attached to demolish the temporary D-wall



## WORKS UPDATE

### ANZAC STATION AERIAL



## WORKS UPDATE

### SURFACE WORKS SEQUENCING



Activity*	Potential Impacts	Duration
Break up of temporary slabs	Noise	1-2 weeks
Excavate	Dust	1 week
Waterproofing and roof patching	N/A	1 week
Delayed pour strip	N/A	1 week
Partial Backfill	Dust/Vibration	1 week
Demolish D-wall	Noise	2 weeks
Final backfill	Dust/Vibration	1 week

\*Note: Activities in each individual work area may overlap

# ENVIRONMENT



## ENVIRONMENT

### D-WALL DEMOLITION – NOISE MITIGATION



- Excavator mounted hammers are a known high impact activity and mitigation measures have been investigated
- Saw cutting trial – both D-Wall and surface breakout
- Hammer sleeve to be trialled through during Stage 3A



*D-wall demolition – tram interchange to concourse*

## ENVIRONMENT

### SURFACE WORKS – NOISE MODELLING



- D-wall demolition presents the highest noise level during the surface works
- All D-wall demolition will occur during normal working hours  
(7am - 6pm Mon to Fri and 7am – 1pm Saturdays)
- Outside of school hours and during school holidays, hammering will be accelerated to comply with Environmental Performance Requirements for Melbourne Grammar School
- Respite will be available for impacted residents via the projects 1800 number

D-Wall Demolition Noise Modelling (dBa)				
<u>Receiver</u>	<u>Scenario</u>			
	2A and 3A	2C	4 and 3B	4 and 5
Hallmark	70	61	71	62
Domain Hill	71	64	71	65
Domain	67	70	75	76
Botanica	55	59	63	71

## ENVIRONMENT

### MITIGATION MEASURES- VIBRATION



- The use of vibrating rollers will be required during the backfilling of the station roof
- As this is the final legacy backfill, certain compaction requirements must be met
- Mitigation measures include:
  - Respite – flexibility in backfill location
  - Reduce vibration settings
- Monitoring will be undertaken during stage 3 to confirm model



## ENVIRONMENT

### MONITORING – 10PM WORKS



- The removal of the gantry crane from the acoustic shed means that cranes on the surface now lift until 10pm each night
- All activities running after 6pm are closely monitored to ensure compliance with NV6
- In April or May this crane will leave site and be replaced with a smaller crane further to the north

Date	Daytime Lifts		Evening Lifts	
	In	Out	In	Out
Tue 8 Feb	59	9		
Wed 9 Feb	53	8		
Thu 10 Feb	25	15	12	2
Fri 11 Feb	50	32	17	4
Sat 12 Feb	33	1		



## WORKS UPDATE

### ANZAC STATION AERIAL





# CREATIVE PROGRAM

## COLLECT A SEEDLING AND COFFEE IN ALBERT ROAD RESERVE POP-UP PARK





**QUESTIONS?**