

DOMAIN PRECINCT

Community Reference Group

Presentation by CYP

07 September 2022

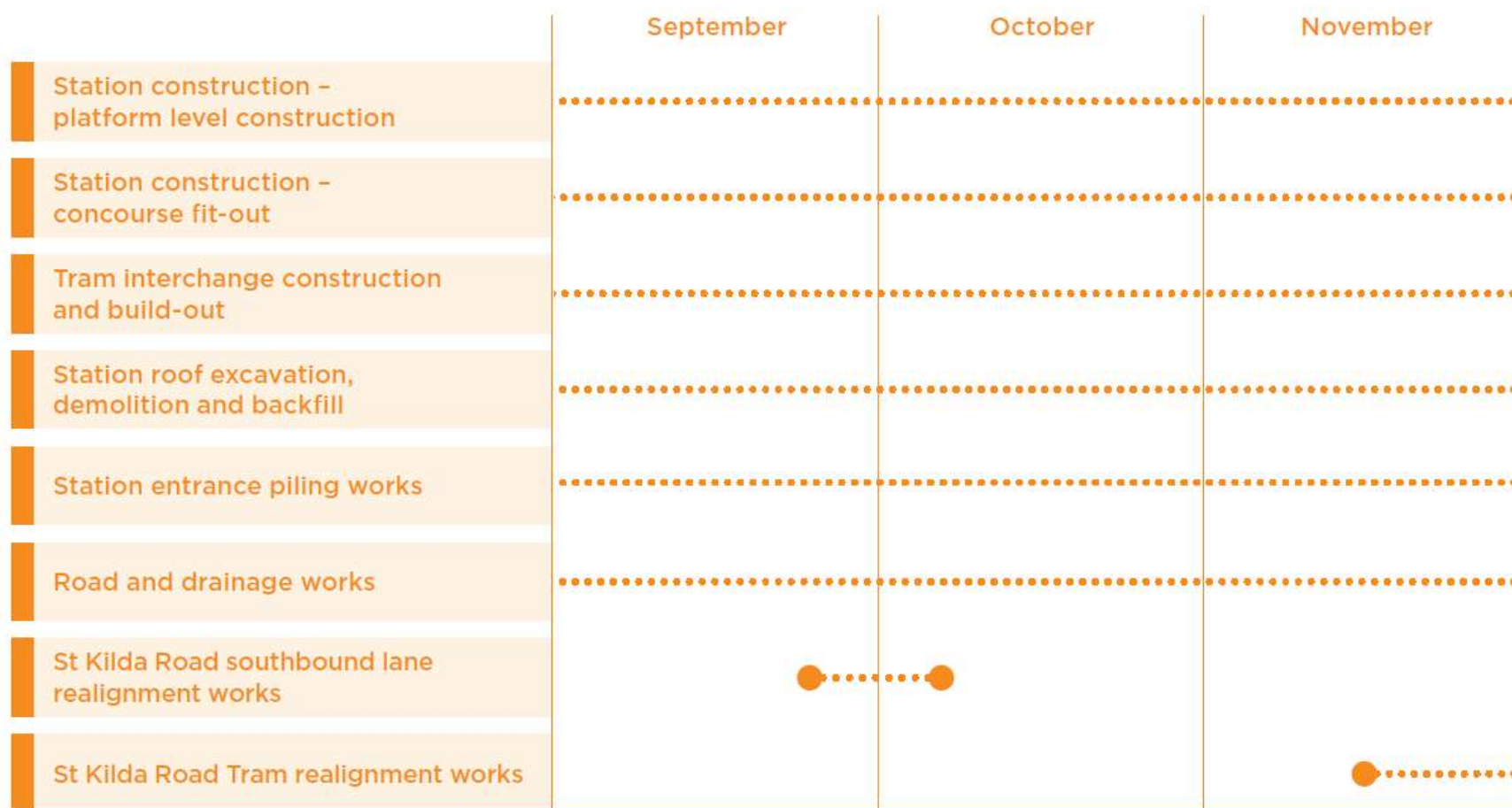




WORKS UPDATE: LOOKAHEAD

WORKS UPDATE

2022 LOOK AHEAD





WORKS UPDATE: STATION CONSTRUCTION



WORKS UPDATE

PLATFORM LEVEL



Platform view up to future escalators

- Platform precast and topping slabs are largely complete
- Emergency stairs are complete in the north and south end of platform
- 1 of 4 lift installs is underway on platform
- Works continue underneath the platform to install electrical conduit trays
- The staircase from concourse down to platform level is underway now with escalators due to arrive in October

WORKS UPDATE

PLATFORM LEVEL



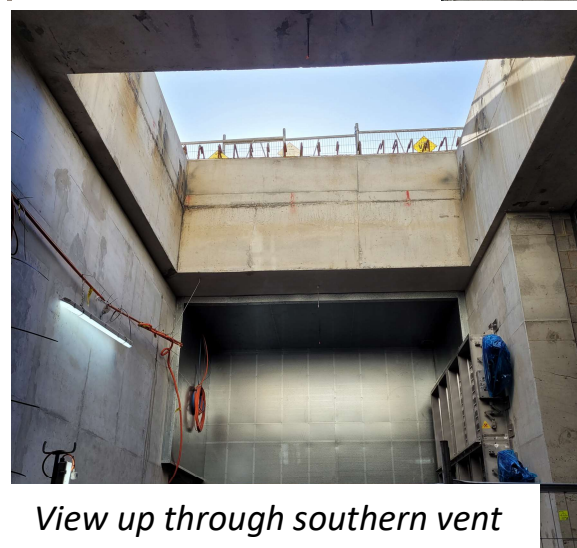
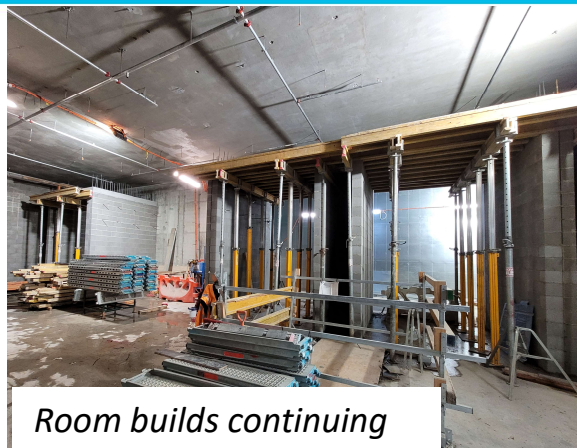
Works underneath platforms (Right)

End of platform construction (Below)



WORKS UPDATE

CONCOURSE LEVEL



- Blockwork is continuing in the northern concourse level with back of house build blockwork nearing completion
- Ventilation equipment delivery continues for the northern end of the station
- Room fitout is continuing in the across the concourse level
- Focus is room completion and commencing handover to Rail Network Alliance (RNA)

WORKS UPDATE

SURFACE WORKS STATUS

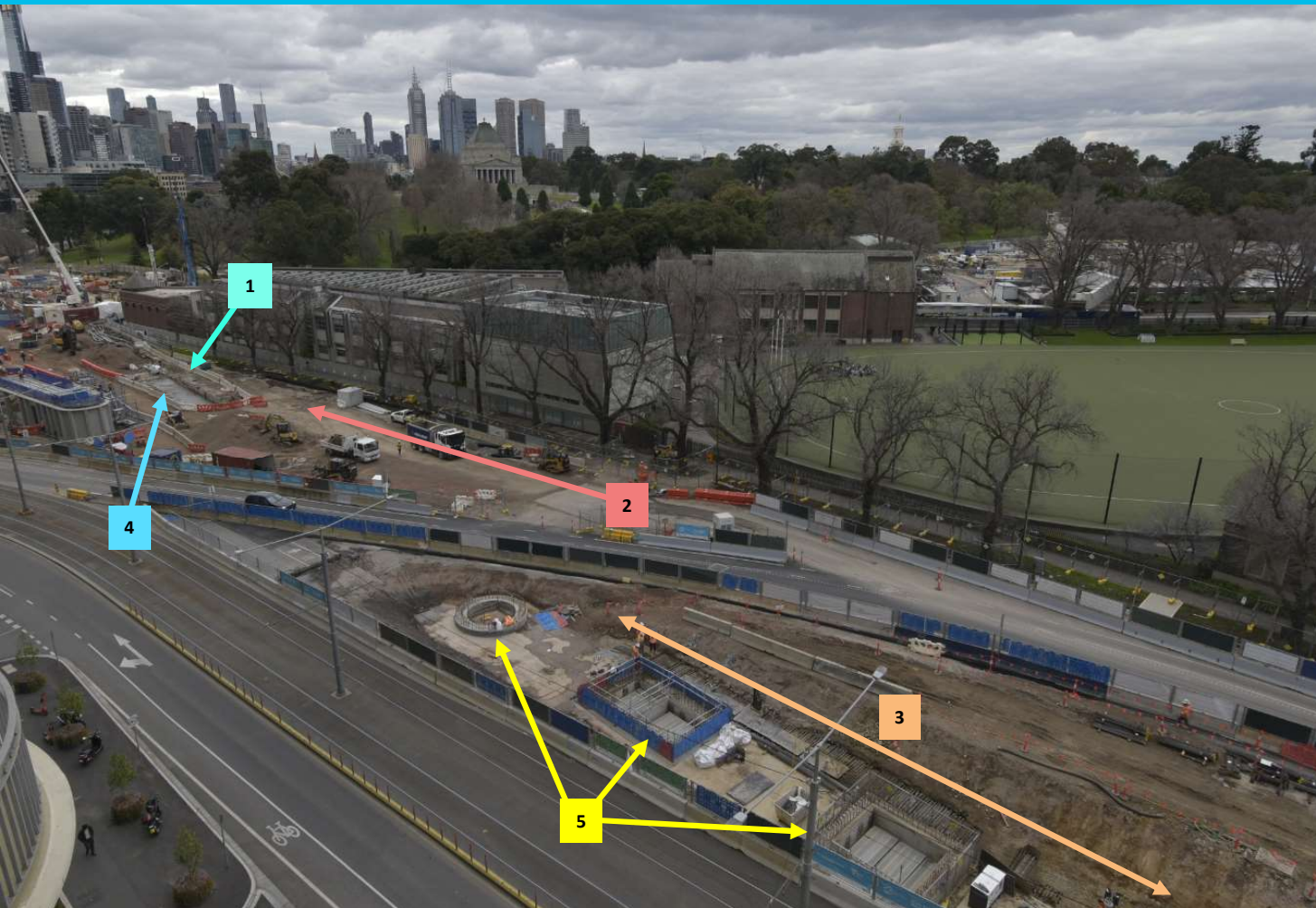


Southern work site

- Demolition of the d-wall is complete at the southern most section of the site
- Sucker truck cleanout of the delayed pour strip is nearing completion
- Installation of the precast panels for the ventilation structures will commence later in September following waterproofing and backfill works

WORKS UPDATE

SURFACE WORKS STATUS – Southern End of Site



Upcoming Activities:

- 1 • D-wall breakout
- 2 • Road preparation
- 3 • Delayed Pour Strip
- 4 • Backfill
- 5 • Infill pour and pre-cast concrete installation

WORKS UPDATE

NORTH OF PARK STREET



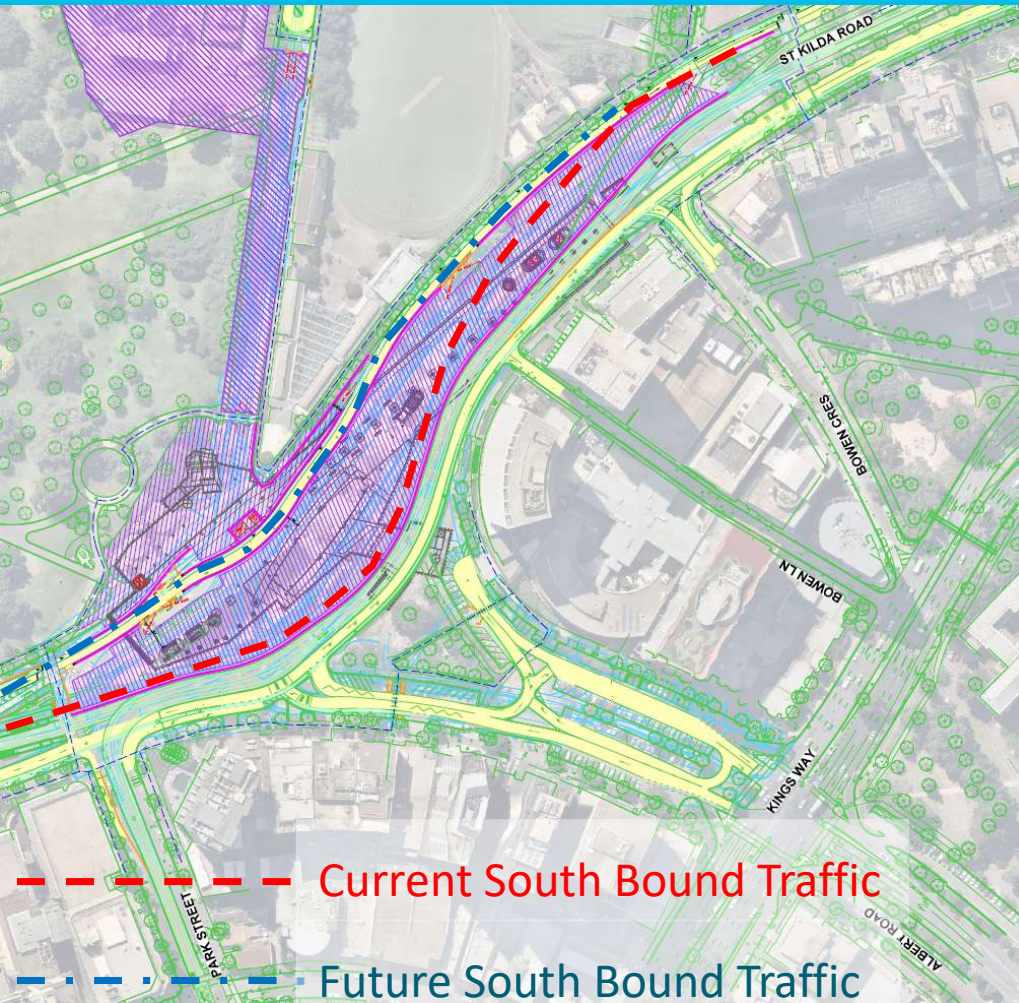
- Preparation of the southbound lane is underway at the northern end of site
- Legacy separated bike lanes have now been installed
- Resurfacing works will continue over the coming weeks



Bike lane separators

WORKS UPDATE

STAGE 2 SOUTH BOUND LANE SWITCH



- The next stage of roadworks on St Kilda Road is the construction of the new southbound lane on the eastern edge of the site
- Switching of this traffic lane will happen approximately early October
- Switching traffic to this new lane will mean that the right turn from Park Street into St Kilda Road is no longer available
- This no-right turn will be in place for approximately 12 months

WORKS UPDATE

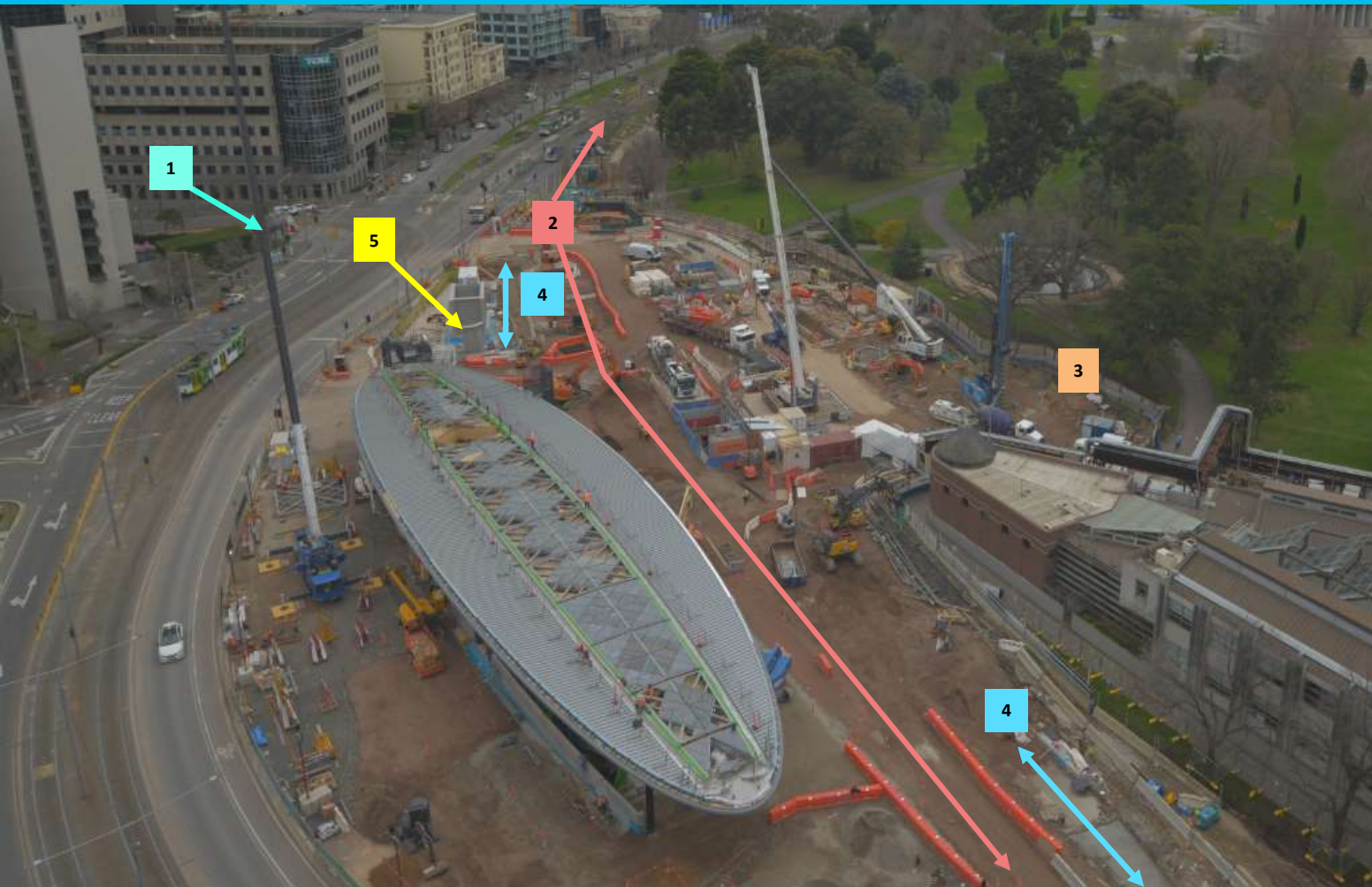
TREE REMOVAL



- After the Traffic switch in early October works will then commence on the future centre median of St Kilda Road
- The two trees pictured are on the final alignment and will need to be removed as part of this works

WORKS UPDATE

SURFACE WORKS STATUS – Northern End of Site



Upcoming Activities:

- 1** • High voltage cable tie-in works (October)
- 2** • Road preparation
- 3** • Entrance piling
- 4** • Backfill
- 5** • Pre-cast concrete install

WORKS UPDATE

TRAM INTERCHANGE



Canopy progress

- Sky lights are being installed on the canopy roof
- The fascia is progressively being installed around the perimeter
- The frame for the entrance roller shutter door has been installed at the two ends of the oculus
- Excavation and conduit laying underneath the platform is now underway
- Tram track works to commence later in September

WORKS UPDATE

Tram Platform Construction – September to November



Tram platform works

- The critical path is to ensure the new tram interchange platform is complete by the 27th November for the occupation.
- Works to excavate and install conduits and drainage pipes may need to continue up to 10pm
- Following that other activities may also extend extend to 10pm.
- The team will continue to evaluate progress and minimise this wherever possible including minimisation of noise generating activities
- Tram track laying will start in October in and around the tram platform



CREATIVE PROGRAM UPDATE

RAAFAT ISHAK



Raafat Ishak was born in Egypt and lives and works in Melbourne.

Working across painting, sculpture, installation and site-specific drawing, Ishak's practice is informed by the history of painting and architecture. His practice is generated through ubiquitous acts of research, experimentation, withdrawal, exclusion and fatigue.

VIDEO

<https://metrotunnel.vic.gov.au/about-the-project/creative-program/legacy-artwork>.



THANK YOU FOR JOINING US TO RAISE FUNDS FOR RED NOSE DAY!



JOIN US FOR AN RU OK DAY FUNDRAISER: THURSDAY 8 SEPTEMBER



INTERNATIONAL TALK LIKE A PIRATE DAY: MONDAY 19 SEPTEMBER

With sea shanties performed by The Grubby Urchins



THE ART OF BOTANICAL ILLUSTRATION

Domain House



THE ART OF BOTANICAL ILLUSTRATION

Domain House



You are invited to join a private tour of The 16th Biennial Art of Botanical Illustration at 10am Wednesday 21 September by the Melbourne Friends of the Royal Botanic Gardens Victoria.

Please register your interest in attending via email by Friday 16 September to:
creativeprogram@metrounnelcyp-pco.com.au





QUESTIONS?