



DOMAIN PRECINCT

Community Reference Group

Presentation by CYP

7 August 2023





WORKS UPDATE: STATION CONSTRUCTION

WORKS UPDATE

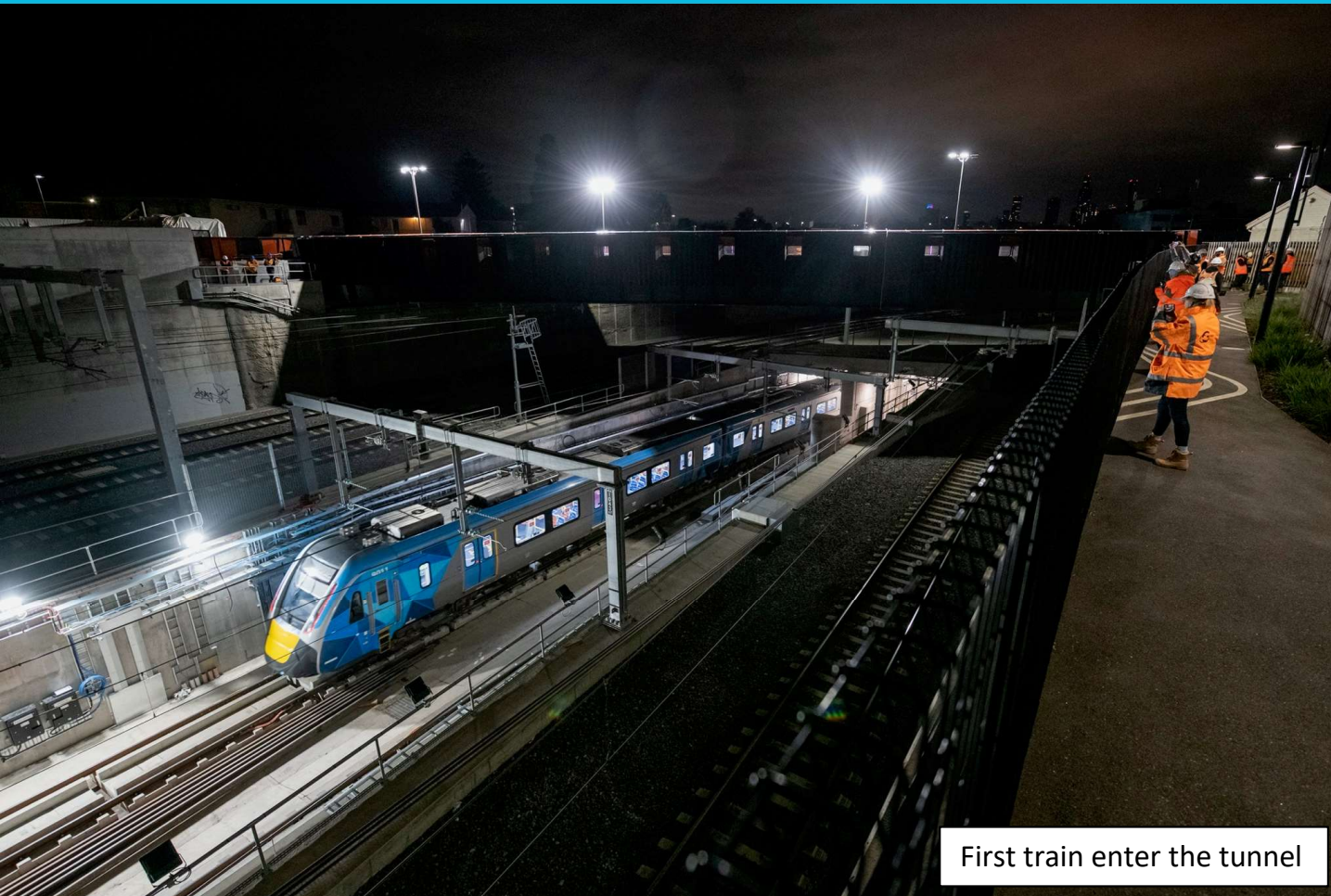
ANZAC STATION AERIAL



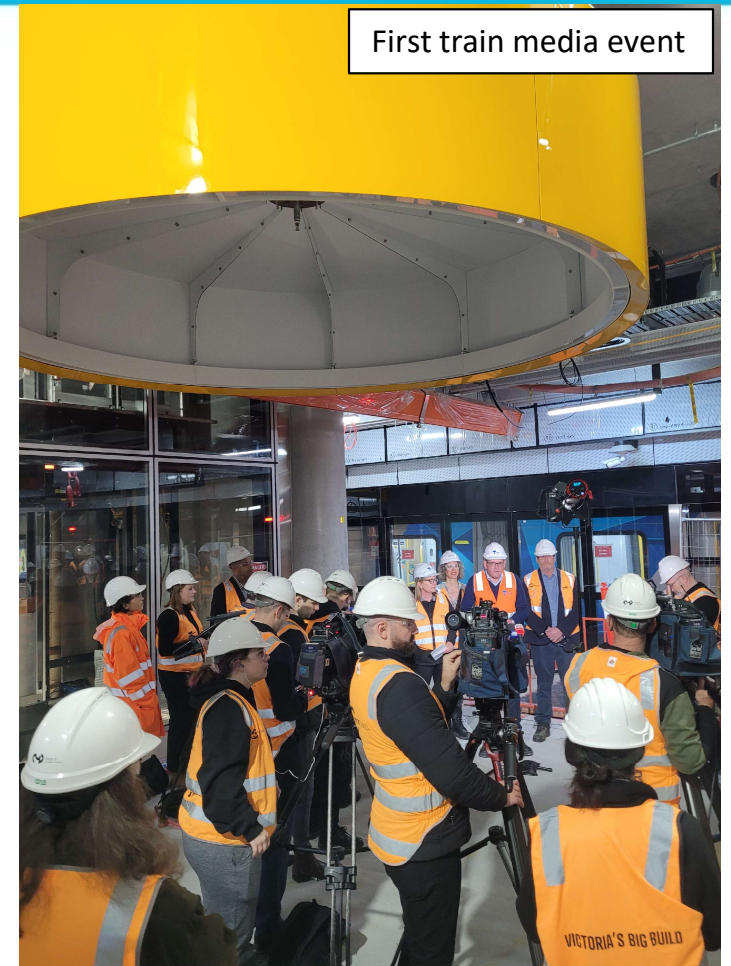
DRONE FOOTAGE MAY 2023

WORKS UPDATE

FIRST TEST TRAIN



First train enter the tunnel



First train media event

WORKS UPDATE

STATION WORKS



Platform Paving

- Paving has commenced for the final platform flooring
- Commissioning is ongoing of the lifts and escalators
- Mechanical, electrical and hydraulic works
- Back-of-house room fit out
- Train testing underway each evening

WORKS UPDATE

TRAM PLATFORM



Tram Platform

- Later this month the hoarding around the tram platform will be scaled back
- This will provide additional passenger space and access to seating
- In September the hoarding at the end of the kiosk will also be scaled back slightly to allow for the planting of trees on the tram platform

WORKS UPDATE

SHRINE OF REMEMBRANCE ENTRANCE

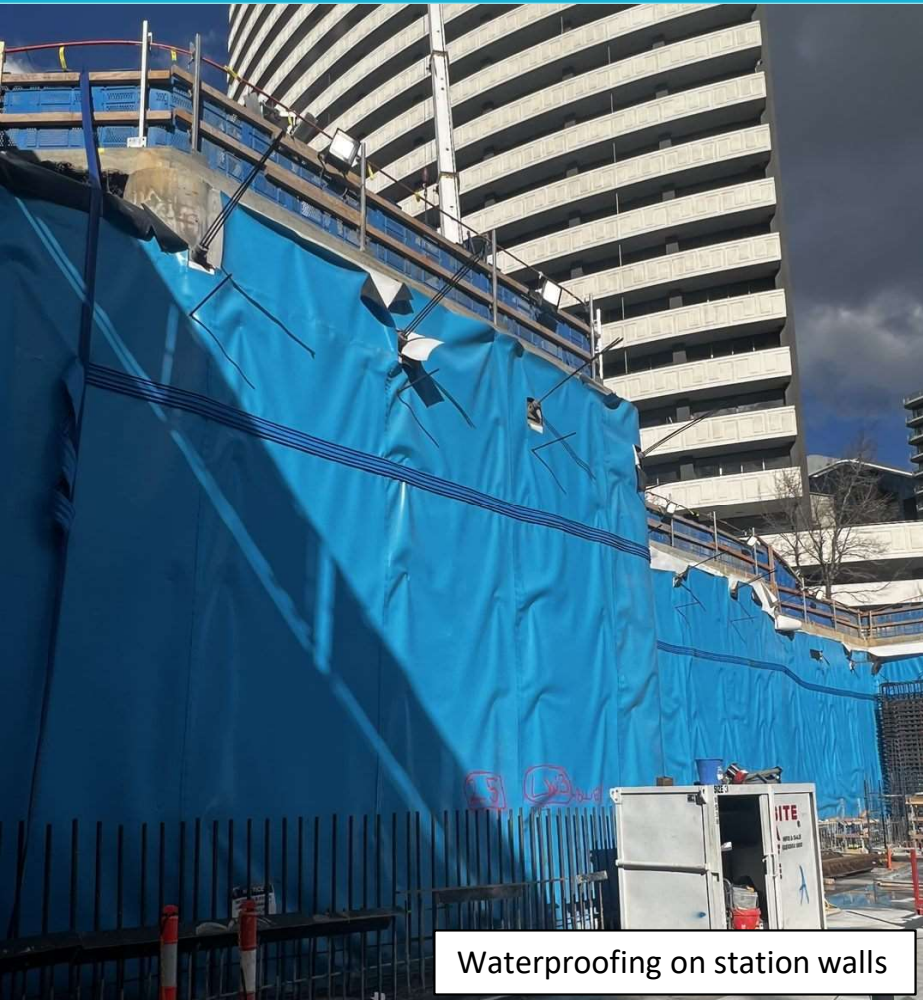


Shrine entrance works

- Installation of precast elements and stairs has now commenced
- Night shift works under the roof will continue through August and September
- Works have commenced on the closure of the logistics voids in the station roof.
- Works now shift to the front and back of house stairs for the entrance

WORKS UPDATE

ALBERT ROAD RESERVE STATION ENTRANCE



Waterproofing on station walls

- Base slab has now been poured for the entrance
- Works are underway for the steel fixing and concrete pours for the station walls
- Formwork decks will be installed later in August to commence on the entrance roof
- Albert Road Reserve entrance is one of the critical components of the overall station construction
- Activities such as steel fixing will continue up until 10pm each night



WORKS UPDATE: SURFACE CONSTRUCTION

ALBERT ROAD CONSTRUCTION UPDATE

ALBERT ROAD



- Footpath works are complete between Albert Road and Park Street, with tree planting, completion of the retaining wall cladding, landscaping to follow
- Access to and from Albert Road at Kings Way will reopen on Wednesday 16 August
- Albert Road will be closed at St Kilda Road from 24 August with traffic U-turned near 18 Albert Road
- The entire eastern end of Albert Road will be closed for resurfacing from the 28 August until 7 September (From 50 Albert Road to St Kilda Road)
- Pedestrian diversions will be in place while these works are underway, with a temporary footpath established on the northern edge of Albert Reserve
- Pedestrian access to local buildings and tram stop will be maintained.

ALBERT ROAD CONSTRUCTION UPDATE

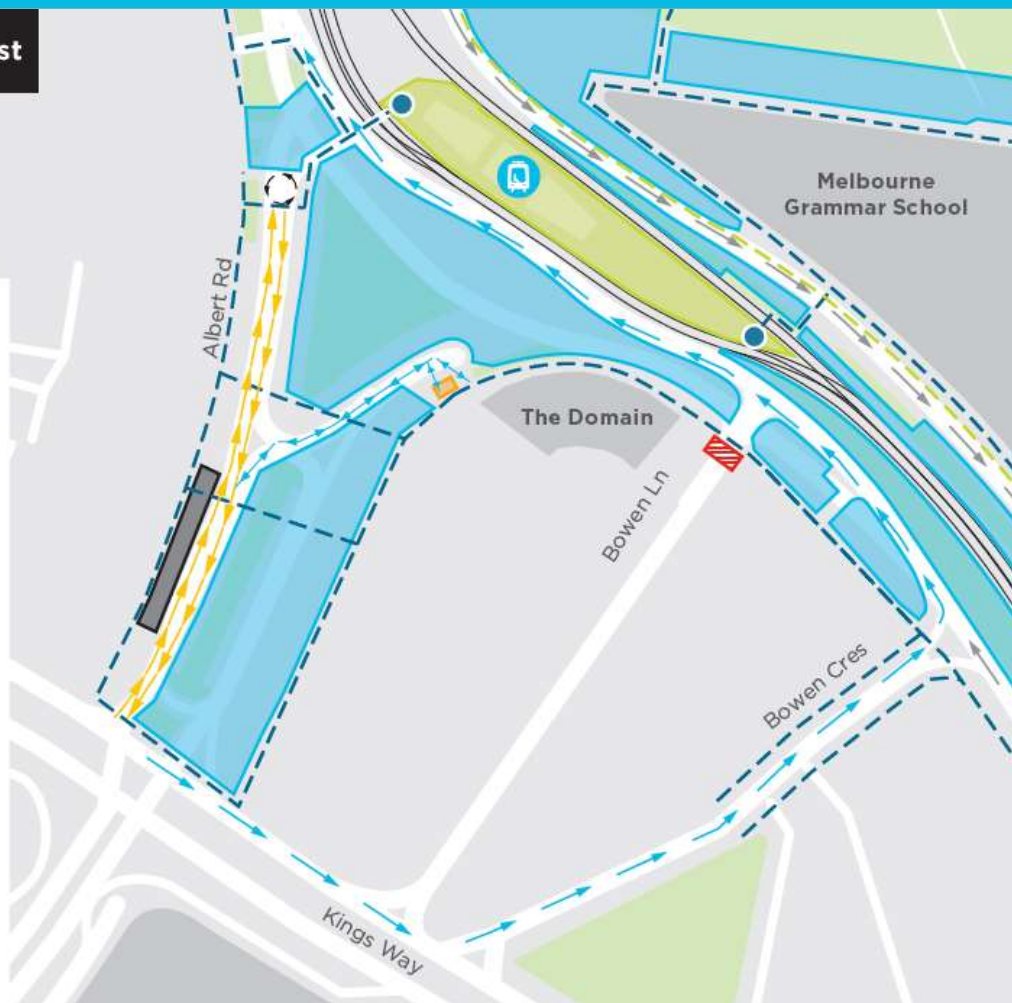
ALBERT ROAD: 24 to 28 AUGUST



Thursday 24 August to Monday 28 August

Legend

- Work site
- Tram stop
- New operational tram platform
- Pedestrian access to new operational tram platform
- Parking
- Accessible parking
- Bowen Lane closure
- Pedestrian access
- Traffic access maintained
- Vehicle access
- St Kilda Road Northbound detour
- Turn around area
- Albert Road south access



ALBERT ROAD CONSTRUCTION UPDATE

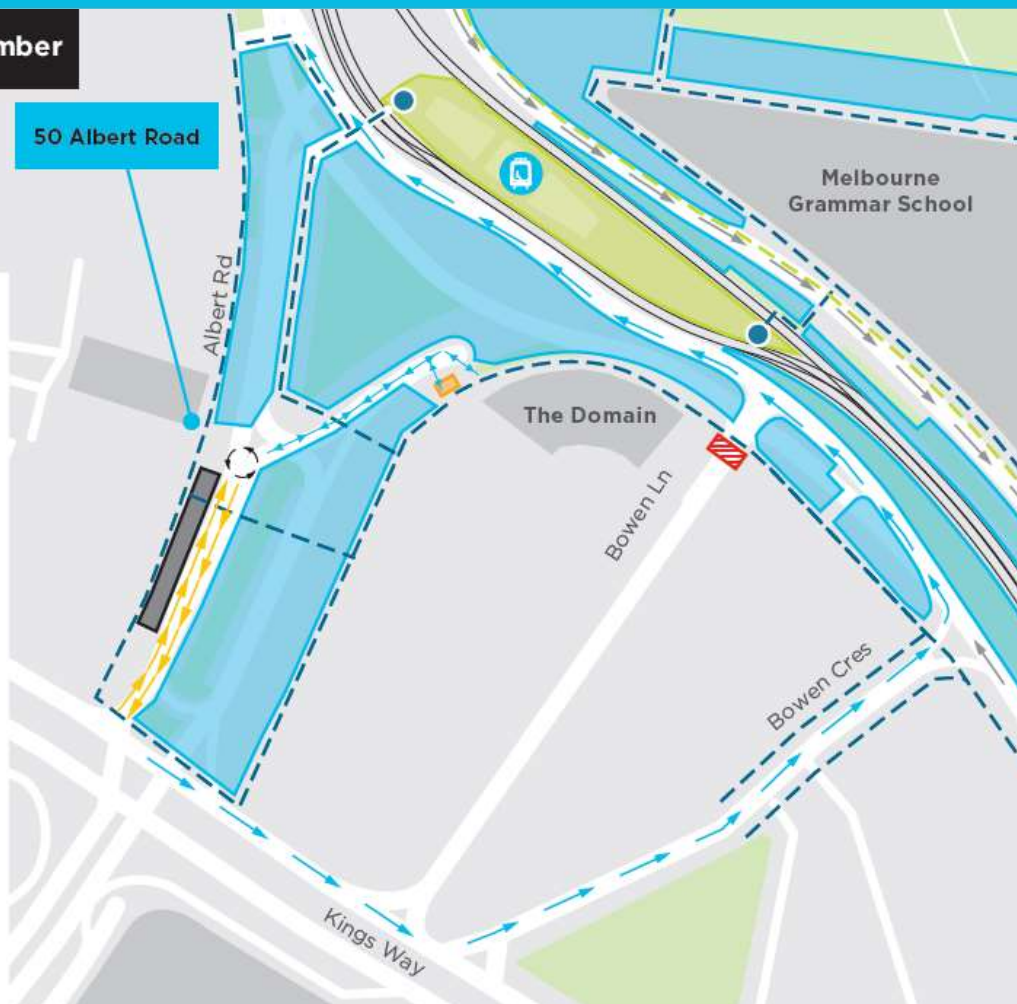
ALBERT ROAD: 28 AUGUST TO 7 SEPTEMBER



Monday 28 August to Thursday 7 September

Legend

- Work site
- Tram stop
- New operational tram platform
- Pedestrian access to new operational tram platform
- Parking
- Accessible parking
- Bowen Lane closure
- Pedestrian access
- Traffic access maintained
- Vehicle access
- St Kilda Road Northbound detour
- Turn around area
- Albert Road south access



WORKS UPDATE

ST KILDA ROAD – BOWEN CRESCENT TO BOWEN LANE (TOWARDS CITY)



Works at Bowen Lane



- Lid has been installed on the service hatch
- Relocation of services between Bowen Crescent and Bowen Lane are ongoing and will be complete in late August
- Kerb installation and the reopening of Bowen Lane is expected in late August
- Re-asphalting of the pavement between Bowen Crescent and Bowen Lane will take place in September, including landscaping

WORKS UPDATE

ST KILDA ROAD - TOORAK ROAD TO BOWEN CRESCENT (TOWARDS CITY)



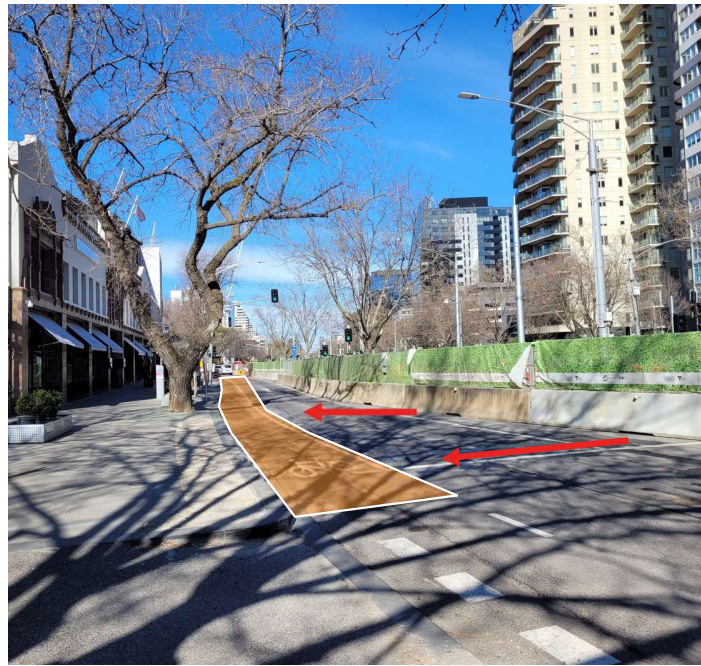
- Drainage works and separated bike lane construction has commenced between Kings Way and Bowen Crescent, with parking permanently removed
- Excavation has commenced for the new drainage connections
- Once connected, the new separated bike lanes will be installed
- Fitout works on the chiller plants is now complete

WORKS UPDATE

ST KILDA ROAD – DOMAIN ROAD TO TOORAK ROAD (AWAY FROM CITY)



Inner Traffic lane to be opened

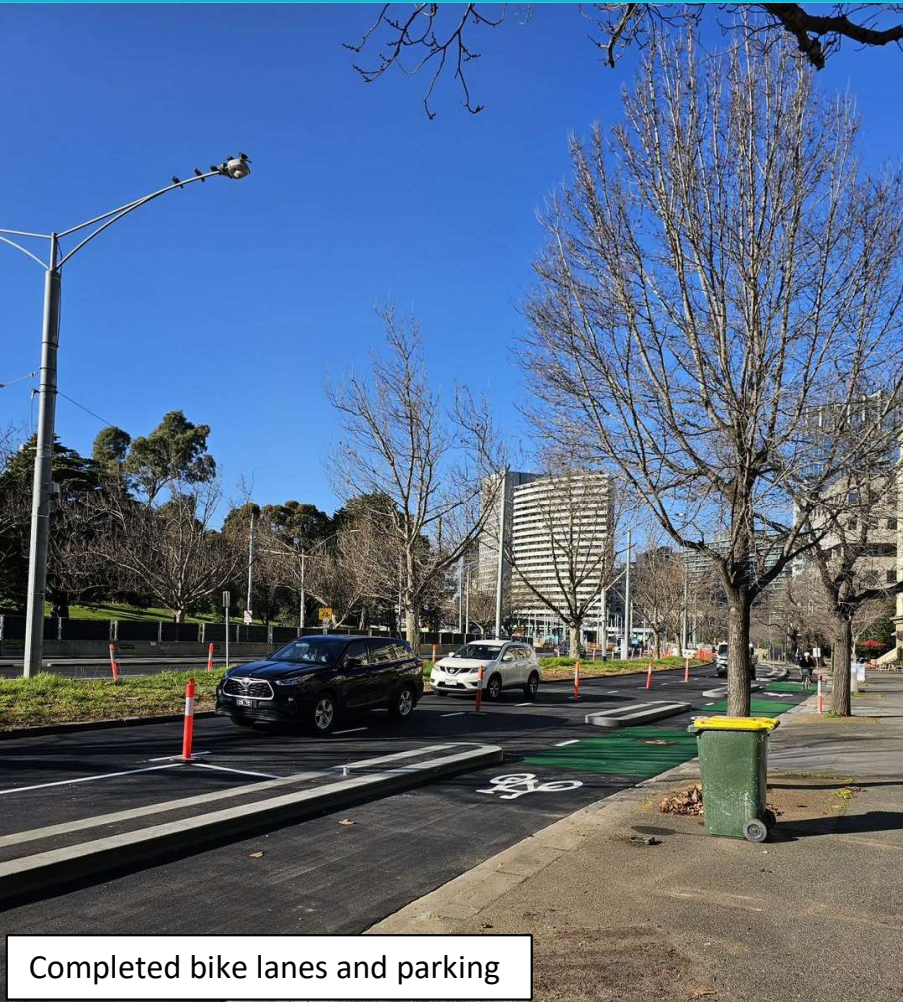


Drainage and bike lane construction

- Installation of street lighting took place in late July
- Traffic will soon be switched to the inner lane of St Kilda Road between the tram stop pedestrian crossing and Toorak Road
- Excavation and installation of drainage and construction of new separated bike lanes will begin between Bromby Street and Toorak Road

WORKS UPDATE

ST KILDA ROAD – PARK STREET TO DORCAS STREET (BOTH DIRECTIONS)



- Park Street is now reopened to St Kilda Road city bound
- Both inner and service lanes of St Kilda Road are now reopened, including on-street parking
- The right turn from Park Street onto St Kilda Road is expected to reopen in September
- Final irrigation works and clean up works of the median are underway, before the area is handed back to Council

WORKS UPDATE

TREE PLANTING

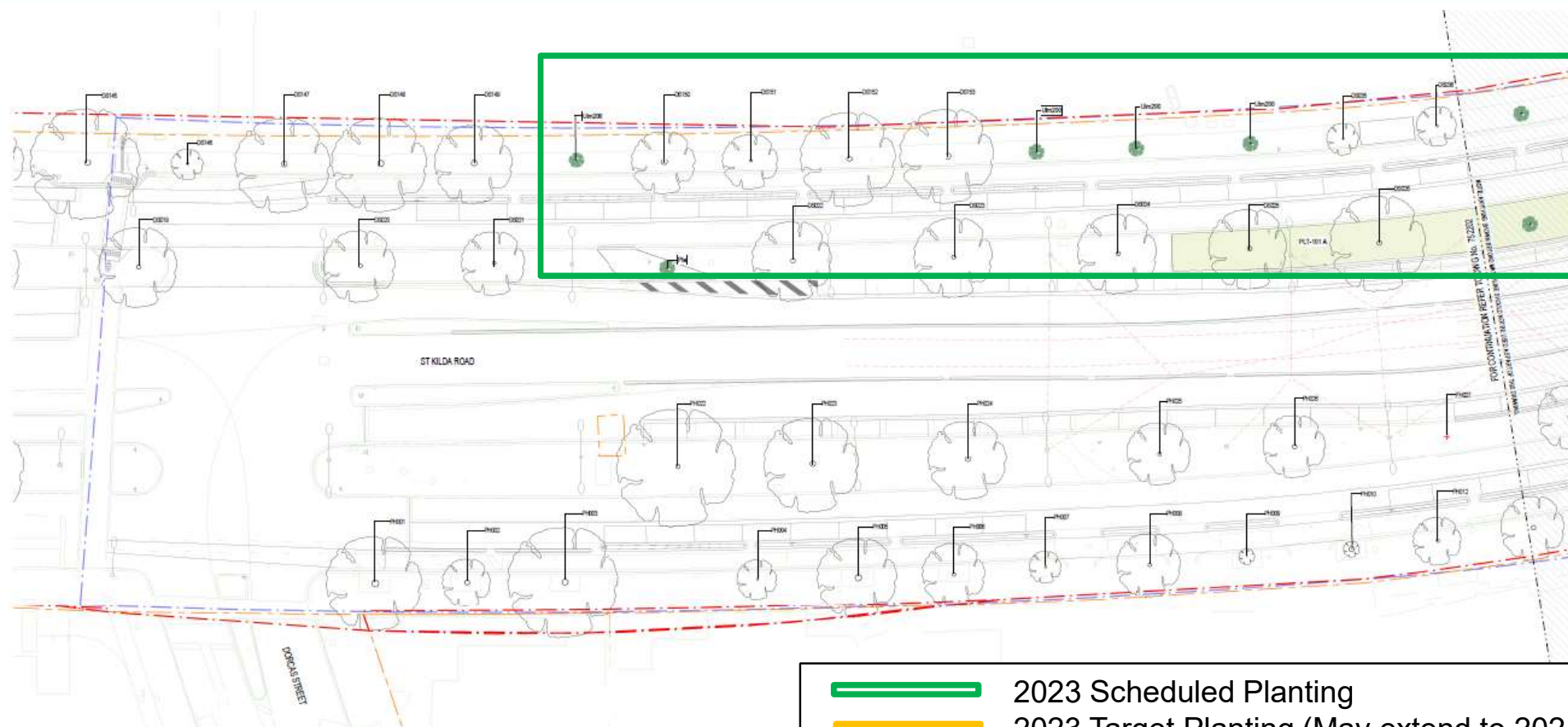


Tree planting on St Kilda Road

- The first of the newly replanted trees on St Kilda Road boulevard was planted by City of Melbourne on Friday 28 July
- Over the coming months, additional tree plots will become available for planting
- The project team are working closely with council to ensure that as many trees as possible can be planted in the 2023 planting window, which remains open until September/October (subject to forecasts and arborist advice)
- The next planting window is April to October 2024
- City of Melbourne, City of Port Phillip and CYP have scheduled in a number of tree planting plots for this current planting season
- CYP has identified opportunities for planting that will become available in September. The planting of these locations will be subject to advice from the relevant council

WORKS UPDATE

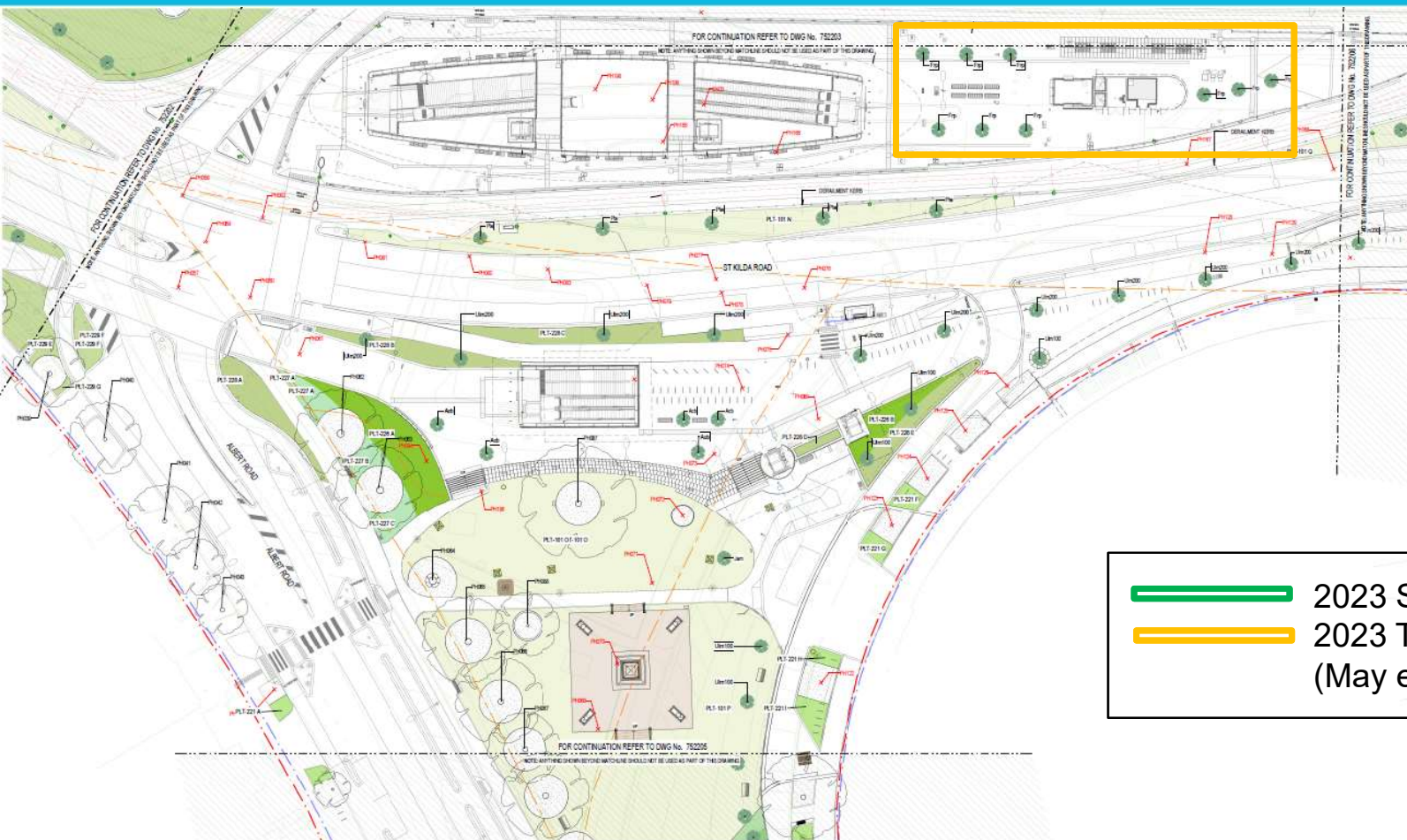
TREE PLANTING TARGET DATES (Dorcas Street to Park Street)





- 2023 Scheduled Planting
- 2023 Target Planting (May extend to 2024 season)

WORKS UPDATE

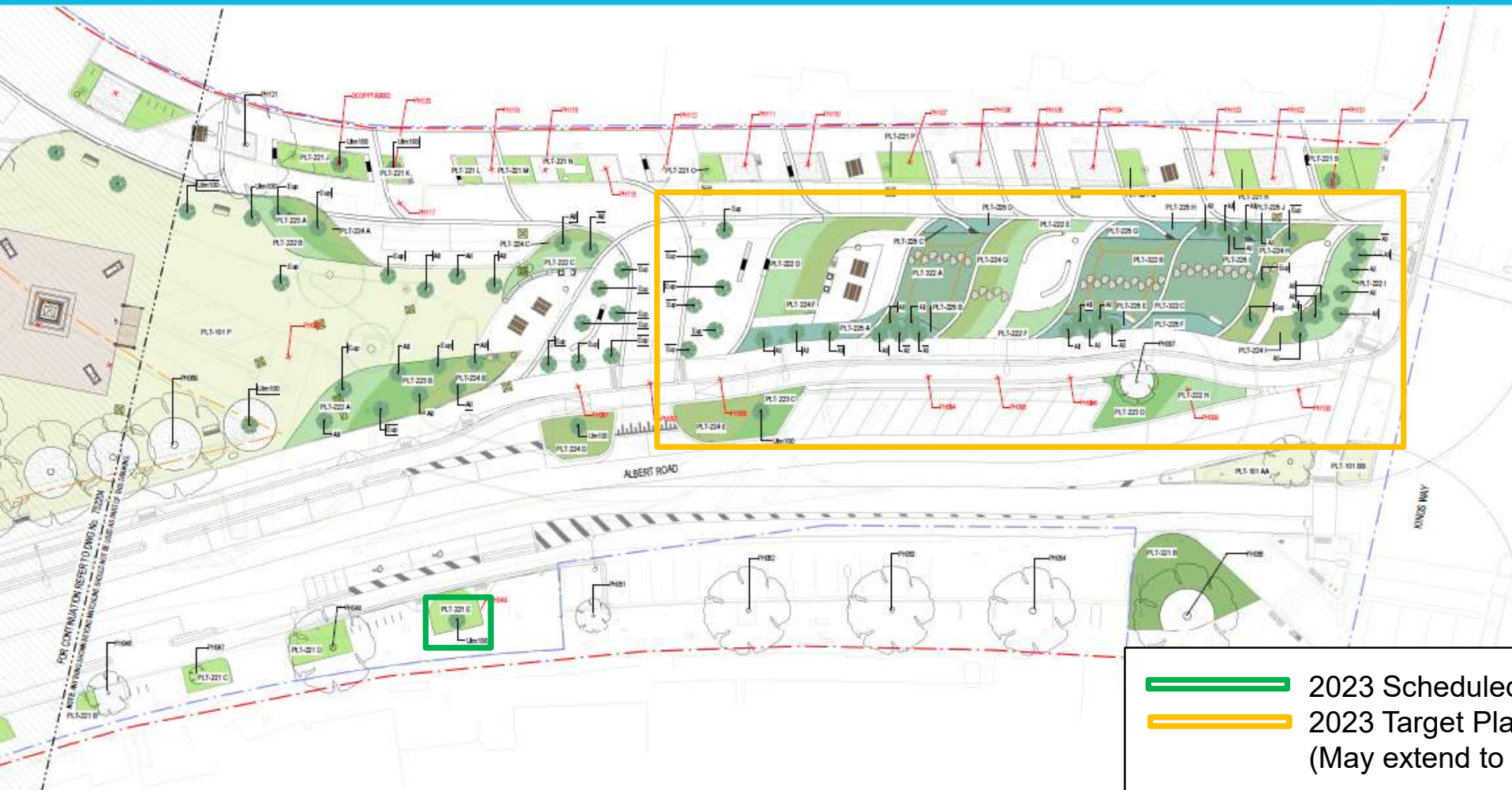
TREE PLANTING TARGET DATES (Albert Road and St Kilda Road)



-  2023 Scheduled Planting
-  2023 Target Planting (May extend to 2024 season)

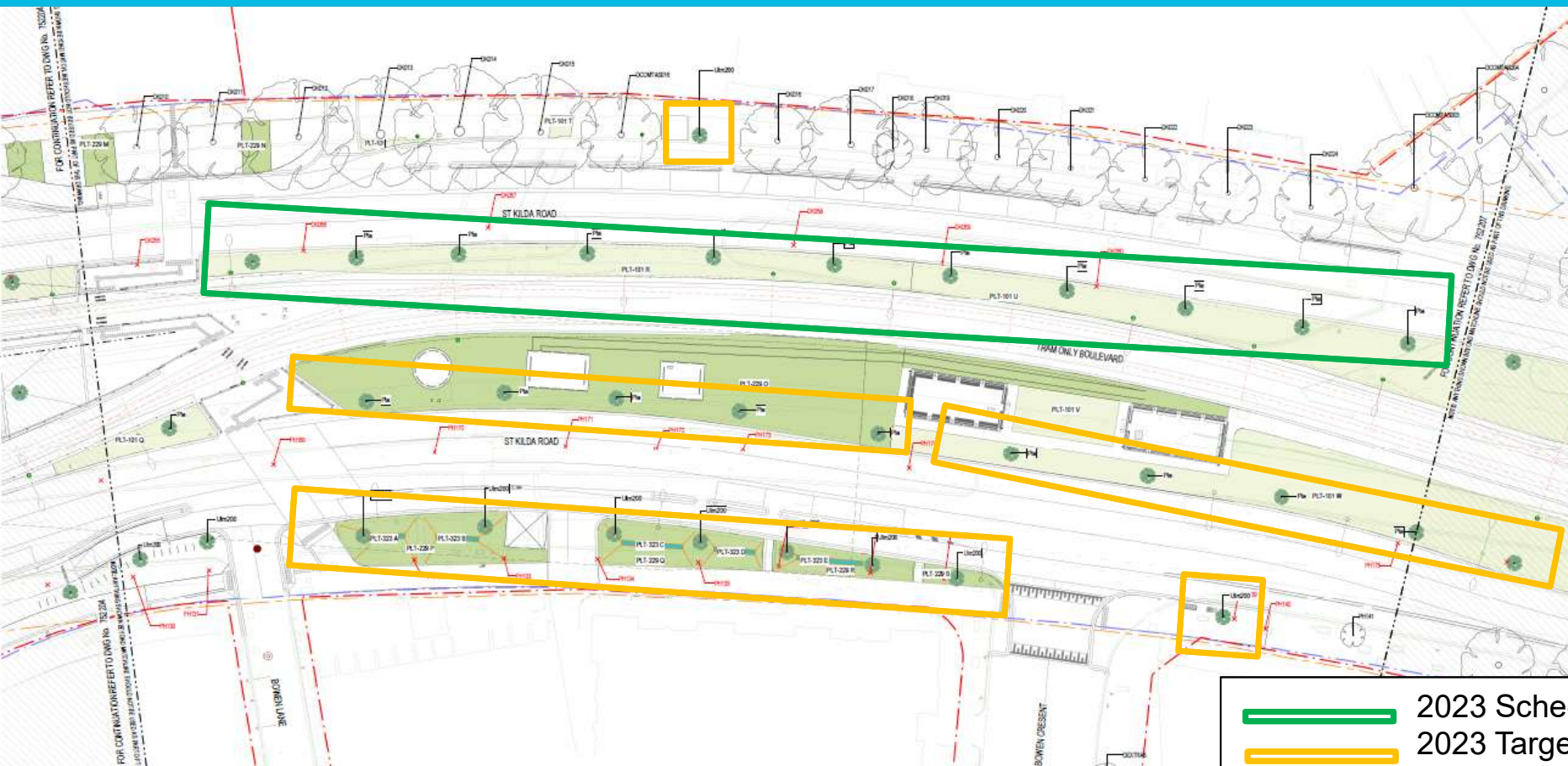
WORKS UPDATE

TREE PLANTING TARGET DATES (Albert Road)



WORKS UPDATE

TREE PLANTING TARGET DATES (Bowen Lane to Bowen Crescent)



- 2023 Scheduled Planting
- 2023 Target Planting (May extend to 2024 season)

WORKS UPDATE

TREE PLANTING TARGET DATES (Bromby Street to Toorak Road)



- 2023 Scheduled Planting
- 2023 Target Planting (May extend to 2024 season)



COMPLETION DATES – CIVIL SURFACE WORKS

COMPLETION FORECAST

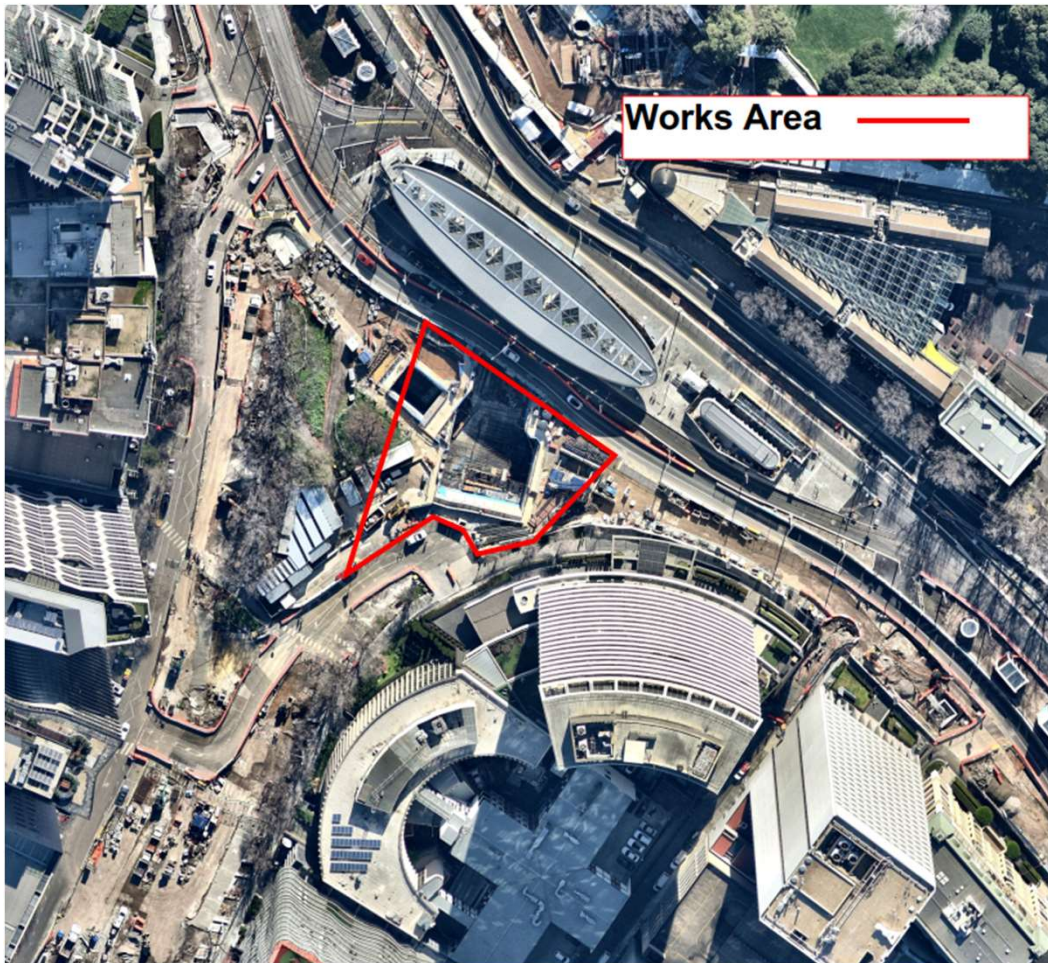


- The start of train testing in the tunnels means that passenger train services are on schedule to commence in 2025
- The current forecast dates for completion of ANZAC Station precinct road and surface works is:
 - **Q4 2024 (St Kilda Road)**
 - **Q1 2025 (Domain Road/Edmund Herring Oval)**
- The team are currently developing a target program to complete all surface works in the precinct ahead of these dates
- At the September CRG we will present the outcomes of this and any improvements to the above dates



ENVIRONMENT UPDATE:

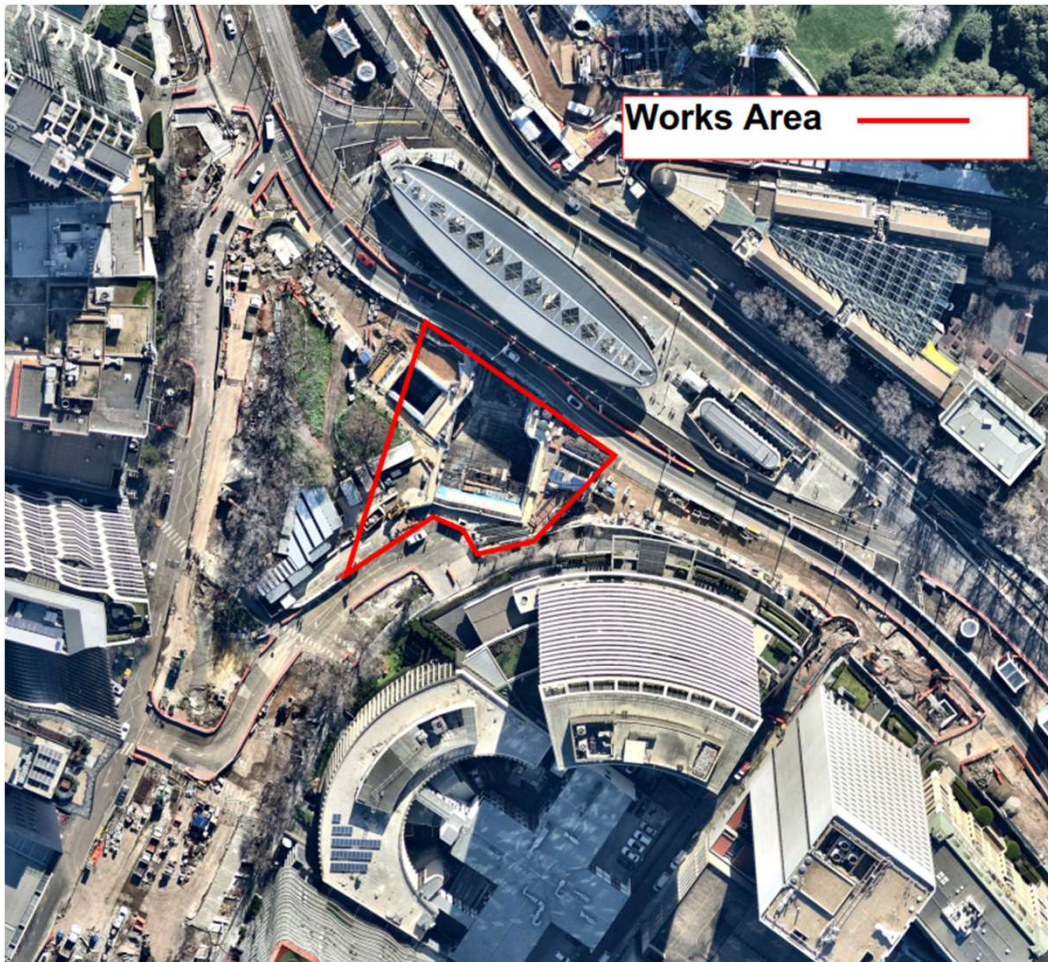
NOISE MODELLING – ALBERT ROAD RESERVE ENTRANCE (FORMWORK)



Formwork involves use of general hand tools associated with formwork preparation activities.

1hr LAeq (dB) 6pm - 10pm	
Receiver	Formwork
Domain	65-70dB
Domain Hill	55-60dB
Hallmark	45-55dB
Botanica	45-50dB

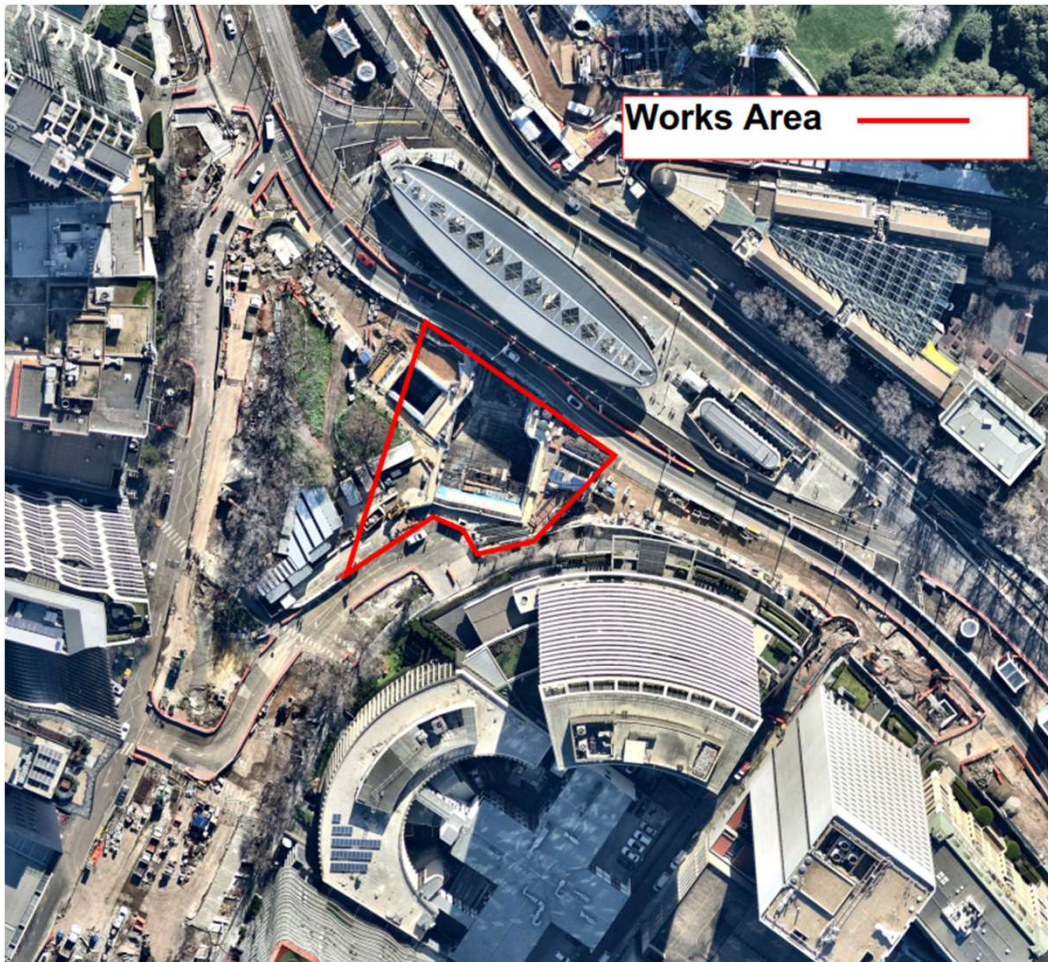
NOISE MODELLING – ALBERT ROAD RESERVE ENTRANCE (STEEL FIXING)



Steel fixing involves use of general hand tools associated with concrete pour prep activities.

1hr LAeq (dB) 6pm - 10pm	
Receiver	Steel fixing
Domain	65-70dB
Domain Hill	55-60dB
Hallmark	45-55dB
Botanica	45-50dB

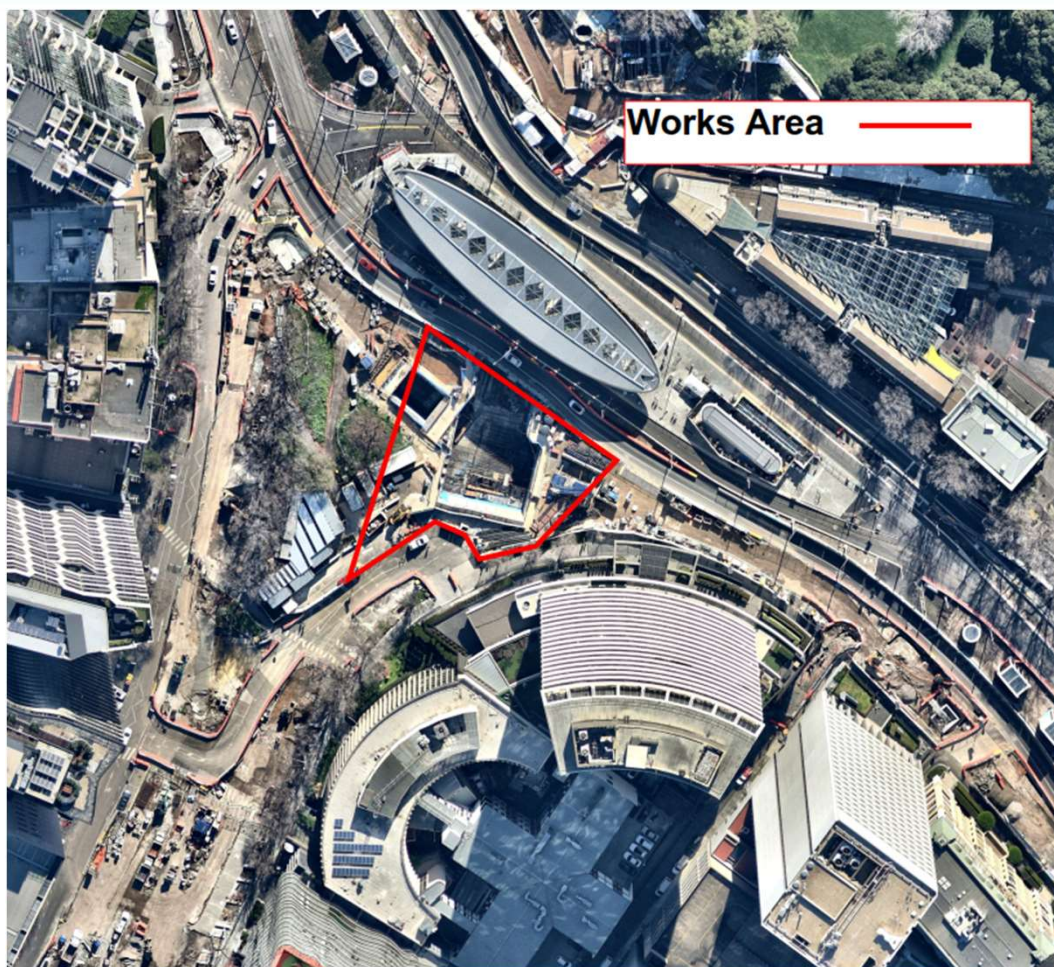
NOISE MODELLING – ALBERT ROAD RESERVE ENTRANCE (STEEL DELIVERY & ERECTION)



Activity involves delivery trucks and the use of a mobile crane to unload and manoeuvre steel into place.

1hr LAeq (dB) 6pm - 10pm	
Receiver	Steel Portal Delivery & Erection
Domain	70-75dB
Hallmark	55-60dB
Domain Hill	55-60dB
Botanica	45-50dB

NOISE MODELLING – ALBERT ROAD RESERVE ENTRANCE (CONCRETE POURS)



Concrete pour activities including use of hand tools, concrete trucks and a concrete pump.

1hr LAeq (dB) 6pm - 10pm	
Receiver	Concrete Works
Domain	75-80dB
Hallmark	55-60dB
Domain Hill	55-60dB
Botanica	50-55dB



TUNNELS AND STATIONS PROJECT WIDE UPDATE